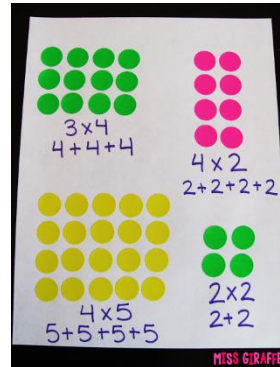


Curriculum overview Summer I – Year I

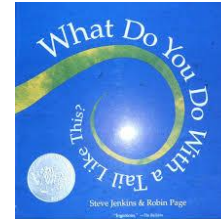
Maths

This term we will be exploring multiplication and division and fractions. This is a brand new unit for us so we will be breaking down this learning into lots of tiny steps. It is essential that we have a deep rooted understanding of multiplication, division and fractions as this will support us all the way through our education and life.



English

We will be exploring texts that link to our science learning 'Animals'. We shall be learning the non-fiction text 'What do we do with tail like this' and writing our own poems based on 'I love bugs.' Throughout this term our key focus will be learning to expand our simple sentences whilst applying our phonics from our Read, Write, Inc lessons.



Phonics

Read Write, Inc is our school for 1 hour a day. It is a structured programme that teaches children to read. Children will be placed in stage, not age groups, which means that everyone will be at the perfect challenge level for their next step of learning. Children are taught sounds and then supported to read them in words and then apply them when spelling.



History

We will be exploring the life of Florence Nightingale and Edith Cavell and we shall learn how they have changed nursing. We will identify the significant impact they made to our world and comparing it to now. We are very lucky to have the opportunity to meet nurses and doctors from now too.



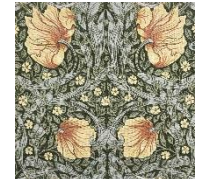
Music

Our title for music this term is "Your Imagination."



Art

Our art focus this term will be based around Block Printing using Food. We will explore the artist – William Morris.



'SAFE, RESPECTED AND READY TO STEP OUT INTO THE WORLD'





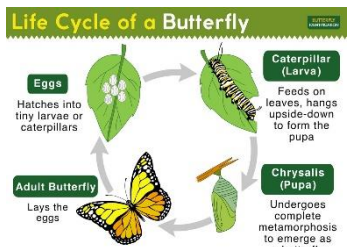
Belong

Creative

Sustainability

Curious

Empowered

<p>PE</p> <p>Our PE day is Monday (full PE kit required) and Wednesday (shoes required.)</p> 	<p>PSHE</p> <p>We will be using Jigsaw for PSHE. This half term our topic is 'Relationships.'</p> 	<p>RE</p> <p>In RE this half term we will be exploring 'Who do Christians say made the world?'</p> 
<p>Computing</p> <p>Our main focus for computing this term will be learning how to take photos, how to crop and edit photos and then create collages.</p> 	<p>Science</p> <p>Our theme for science is 'animals'. We will be learning about animal habitats, life cycles and food chains. We will also be looking and observing wildlife within our school grounds.</p> 	
<p>Key information:</p> <p>Water bottles must be brought to school every day – only water is allowed in class. Squash is allowed at lunchtimes only.</p> <p>Our PE day is Monday, full kit is required and Wednesday, only shoes required. Morning snacks must be fruit, vegetables or cheese only.</p> <p>Please ensure all school uniform and PE kits are labelled with your child's name.</p> <p>Reading books and logs are required to come into school every day. Please support your child by reading at home. Reading books will be changed most days. Whilst your child is reading blending books we will change them after 1 read but they will be given out more than once to help your child become really familiar with reading those words. When your child is reading story books we suggest three reads, over three days. This is to develop a deep understanding of what is being read and to build fluency and speed.</p>		

'SAFE, RESPECTED AND READY TO STEP OUT INTO THE WORLD'

Belong

Creative

Sustainability

Curious

Empowered